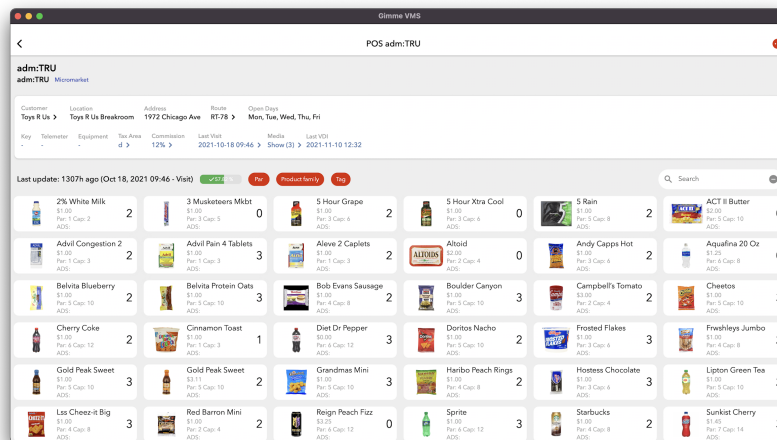


# Micro Market: POG view vs. Inventory builder

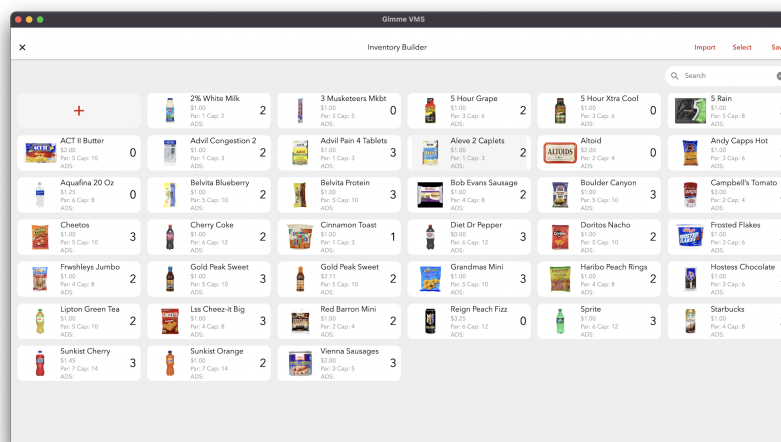
**Planogram View:** this view is more condensed compared to the planogram builder view

- This view contains products placed in the market containing one or more of these values:
  - Inventory
  - Restock
  - Capacity



### Planogram Builder view:

- This view displays all the products placed in the market
  - Includes products with zero capacity, restock, and inventory so they can be scanned and purchased in these two instances:
    - A user swaps a product and/or changes the capacity and restock to zero
    - If the inventory of a product is incorrectly changed to zero



When a driver takes inventory of a market, the products in the **Planogram Builder view** will appear during the spot check. To create a more efficient way of inventorying a market:

1. Import POG from an existing market into the new market
2. Adjust the restock/capacity of products
3. Pick products and place them in the market
4. Complete a full inventory
5. Remove any products with a zero inventory on the Inventory Builder screen

\*Note: products visible in the POG view in VMS are visible to Gimme Field users. Products with a zero par, cap, restock, and zero inventory will not display in the POG view in VMS or Field for a micro market visit.